

ERICSSON NETWORK RESOURCE GATEWAY

Enabling converged value added services

NRG - What is it?

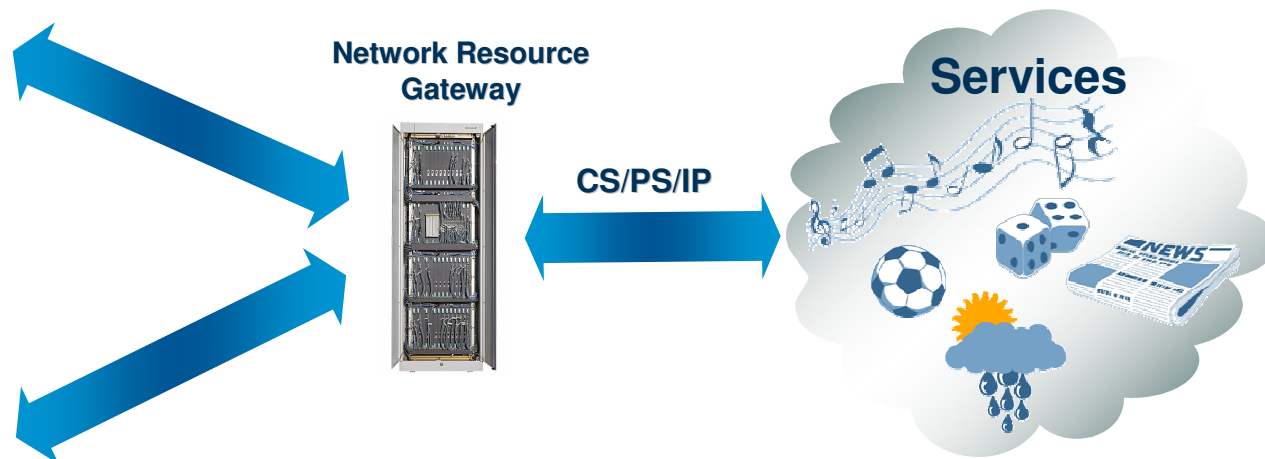
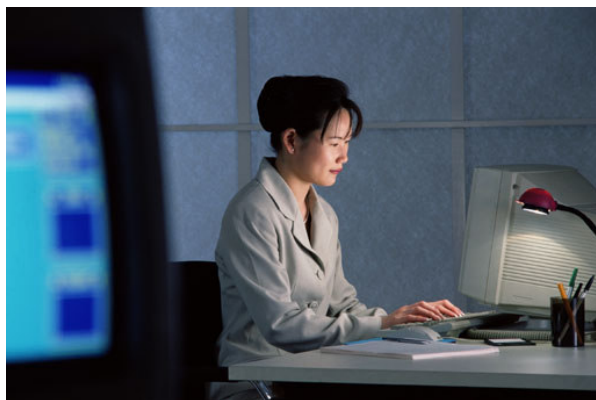
Network Resource Gateway

- The Ericsson's Parlay Gateway
- By OSA/Parlay and standardized APIs (including Parlay X Web Services)
- F/M convergence: Applications seamlessly working towards IP, Fixed & Mobile Networks
- Controlled and secure access to the capabilities of the telecom network .e.g: Voice, MMS, SMS, Location
- Horizontal Architecture - One Time Integration and Service Enabler Integration
- Supported by uniform Software Development Kit (SDK) for easy software development
- With Business-to-business support for applications

NRG - What is it ?

IP, Fixed & Mobile Networks convergence

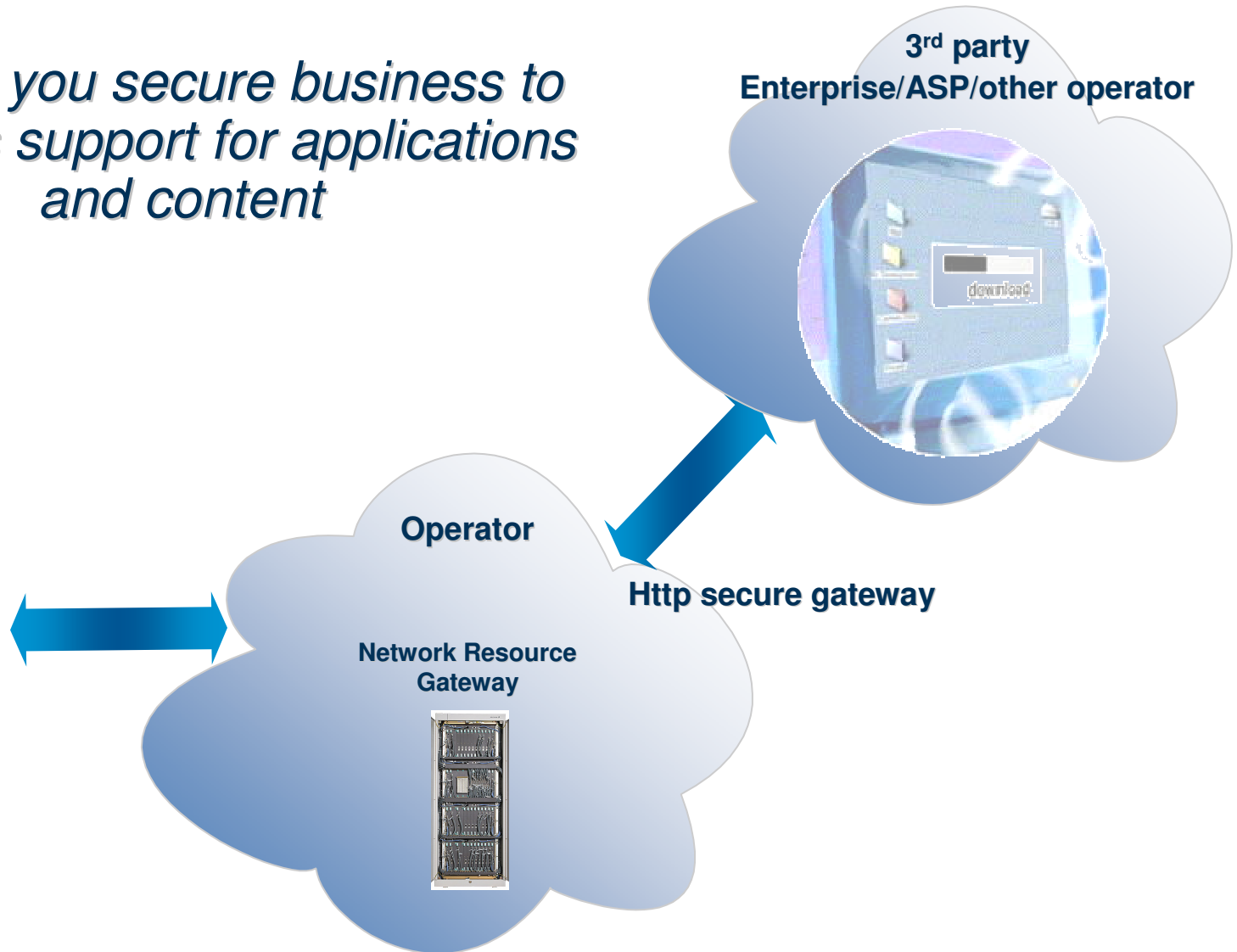
With NRG you can access the same service regardless of fixed, mobile or IP networks



NRG - What is it?

Controlled and secure access to the capabilities of the telecom network

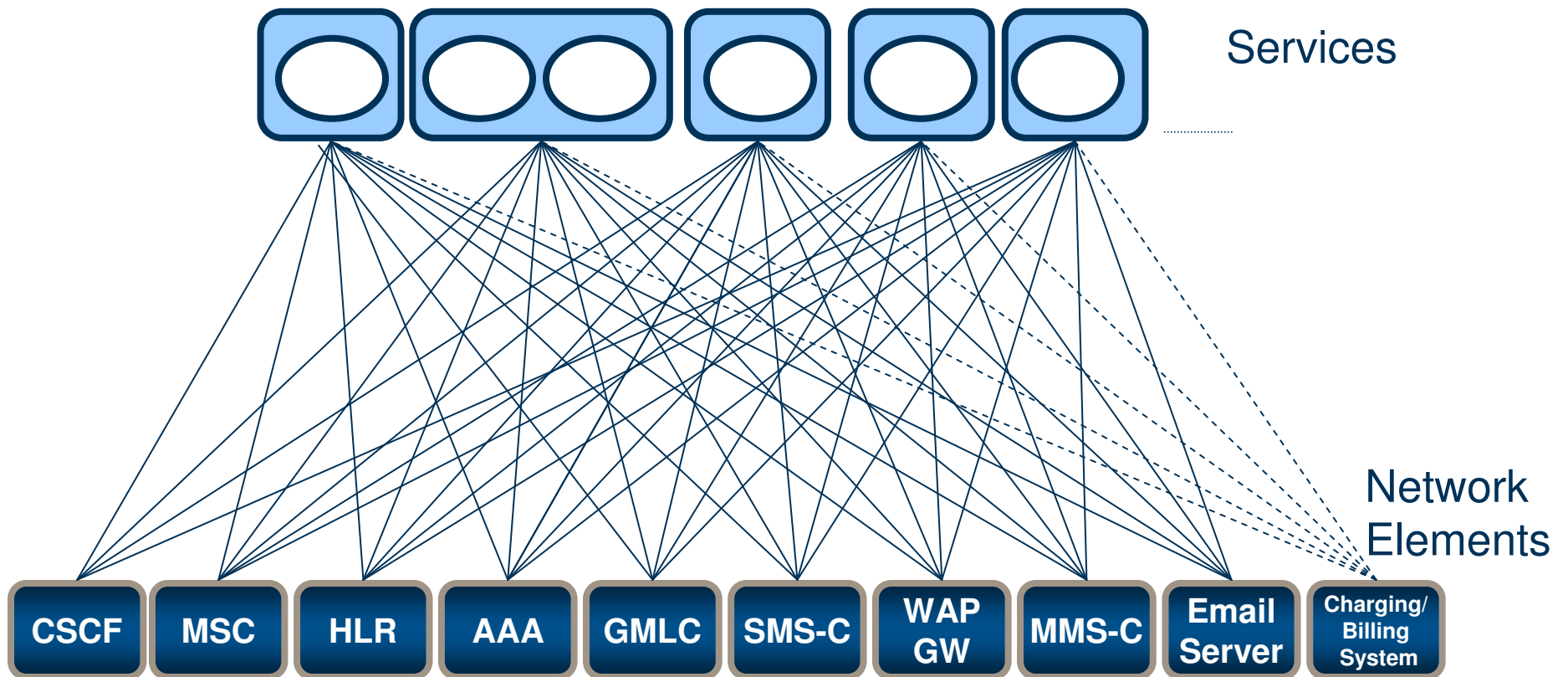
NRG gives you secure business to business support for applications and content



NRG - What is it?

Today's Situation

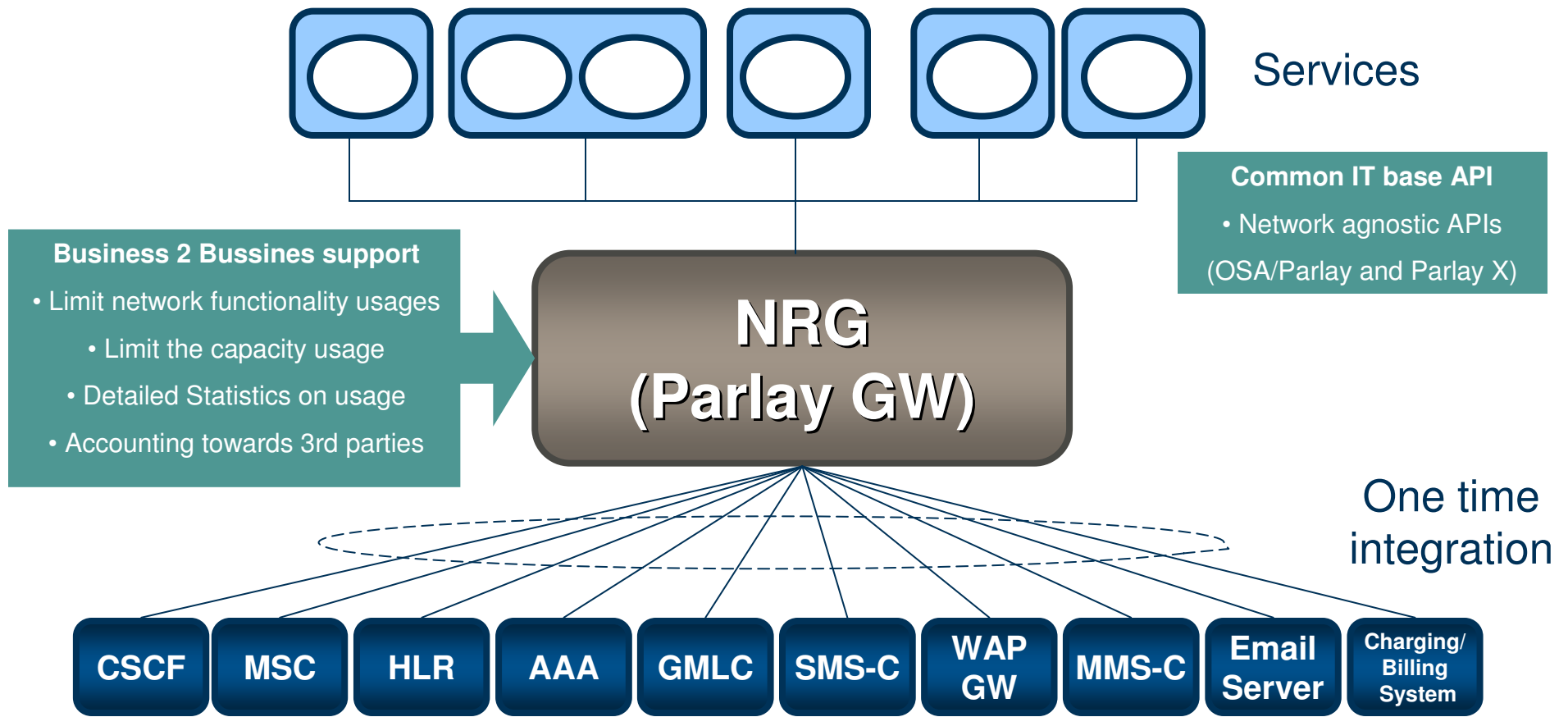
Today's situation – Service integration in Telecom networks



NRG - What is it?

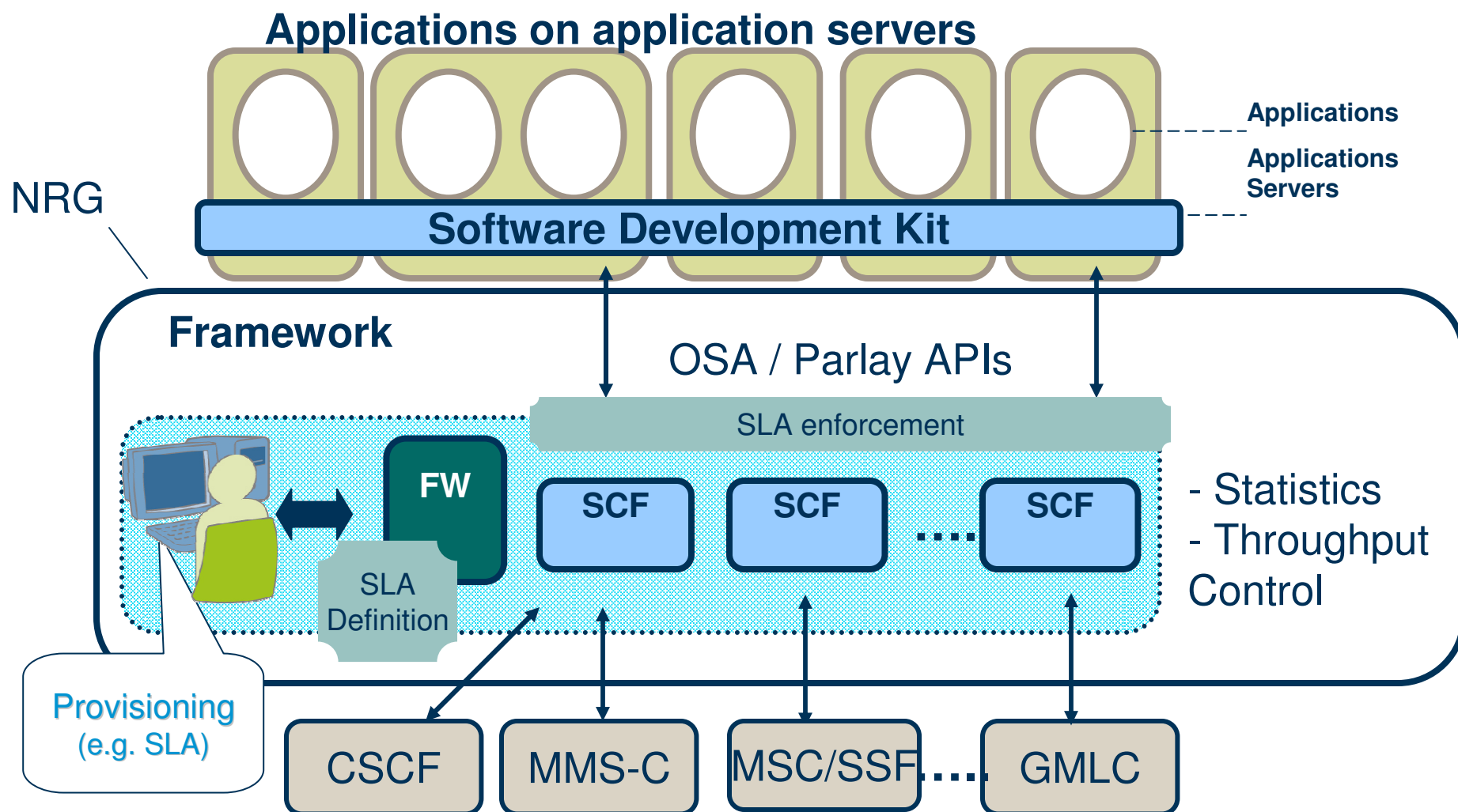
Horizontal Architecture – Common GW

*With NRG you achieve a horizontal architecture with
“one time integration”*



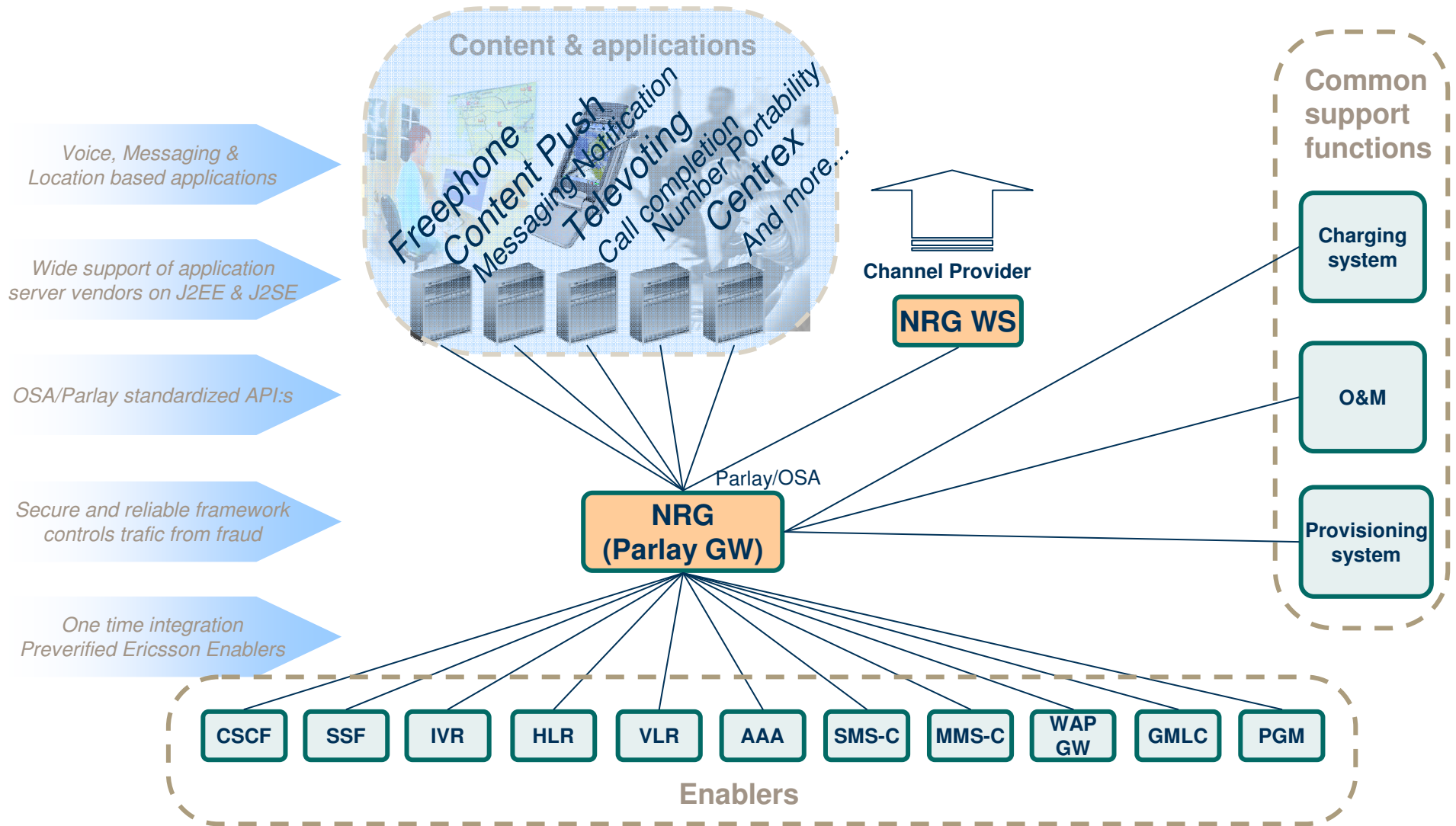
NRG – How it works

OSA/Parlay applications



OSA/Parlay Environment

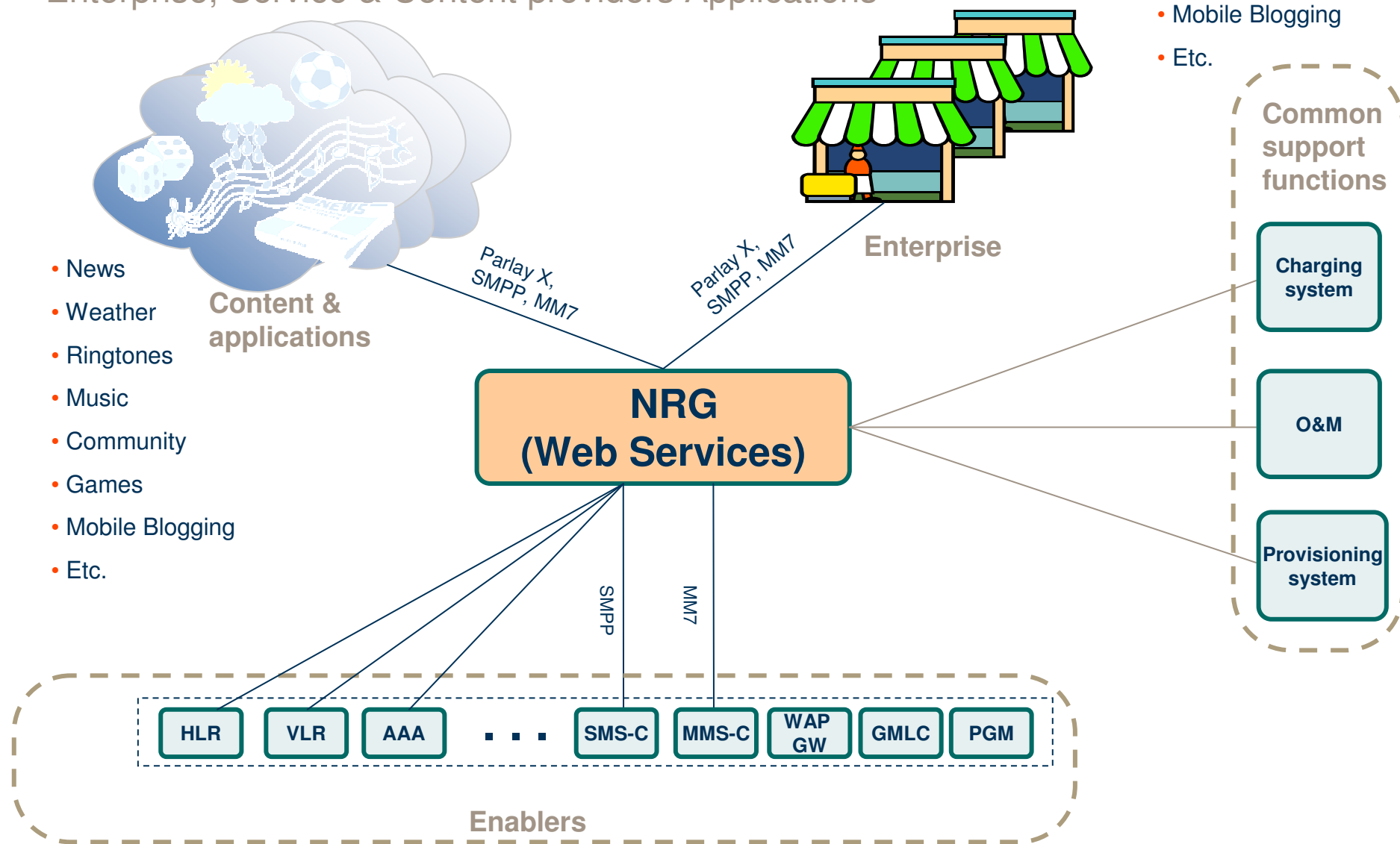
Operator Content & Applications



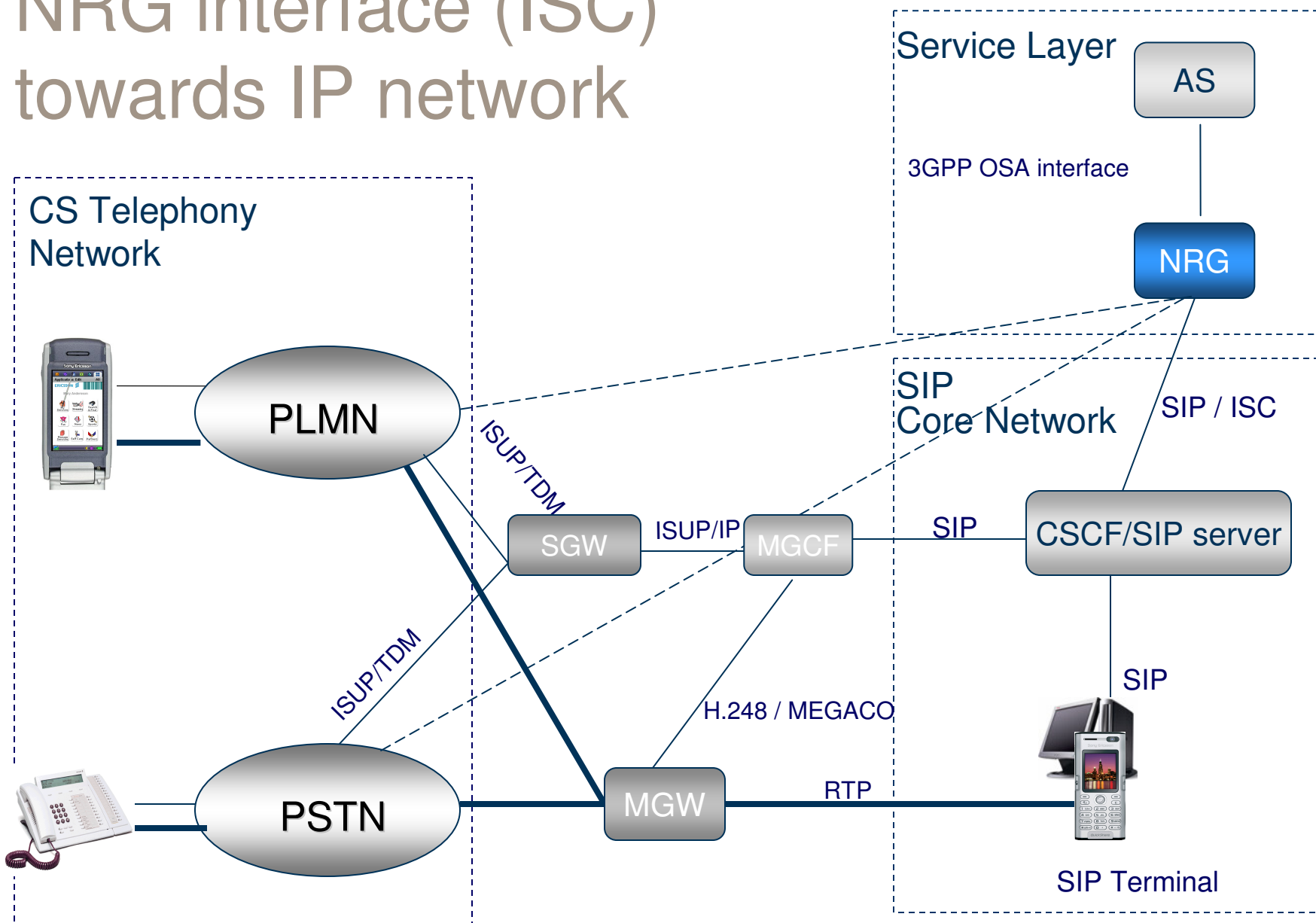
Parlay X System Environment

Enterprise, Service & Content providers Applications

- Email
- Field Services
- Marketing Services
- Mobile Blogging
- Etc.



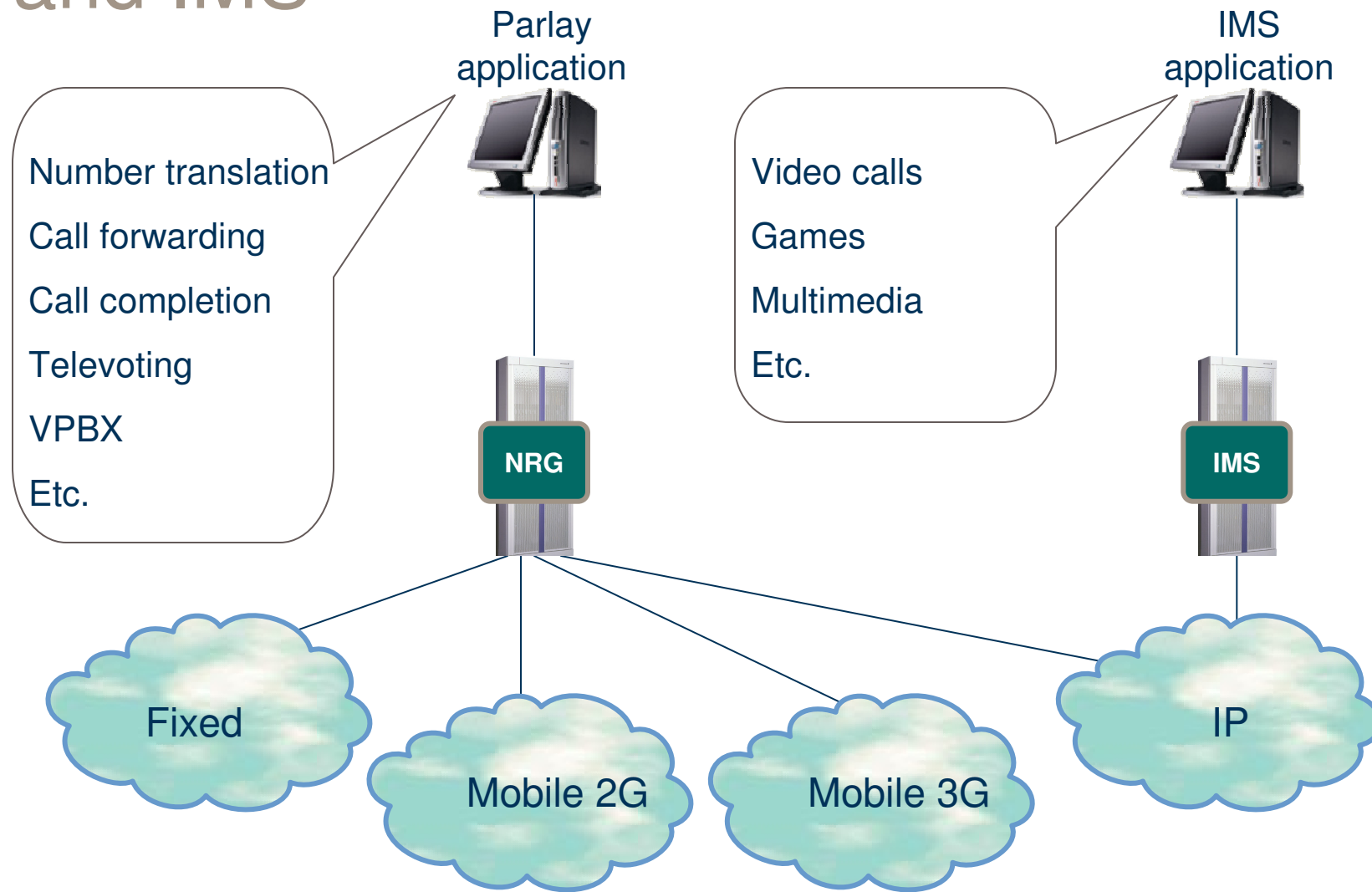
NRG interface (ISC) towards IP network



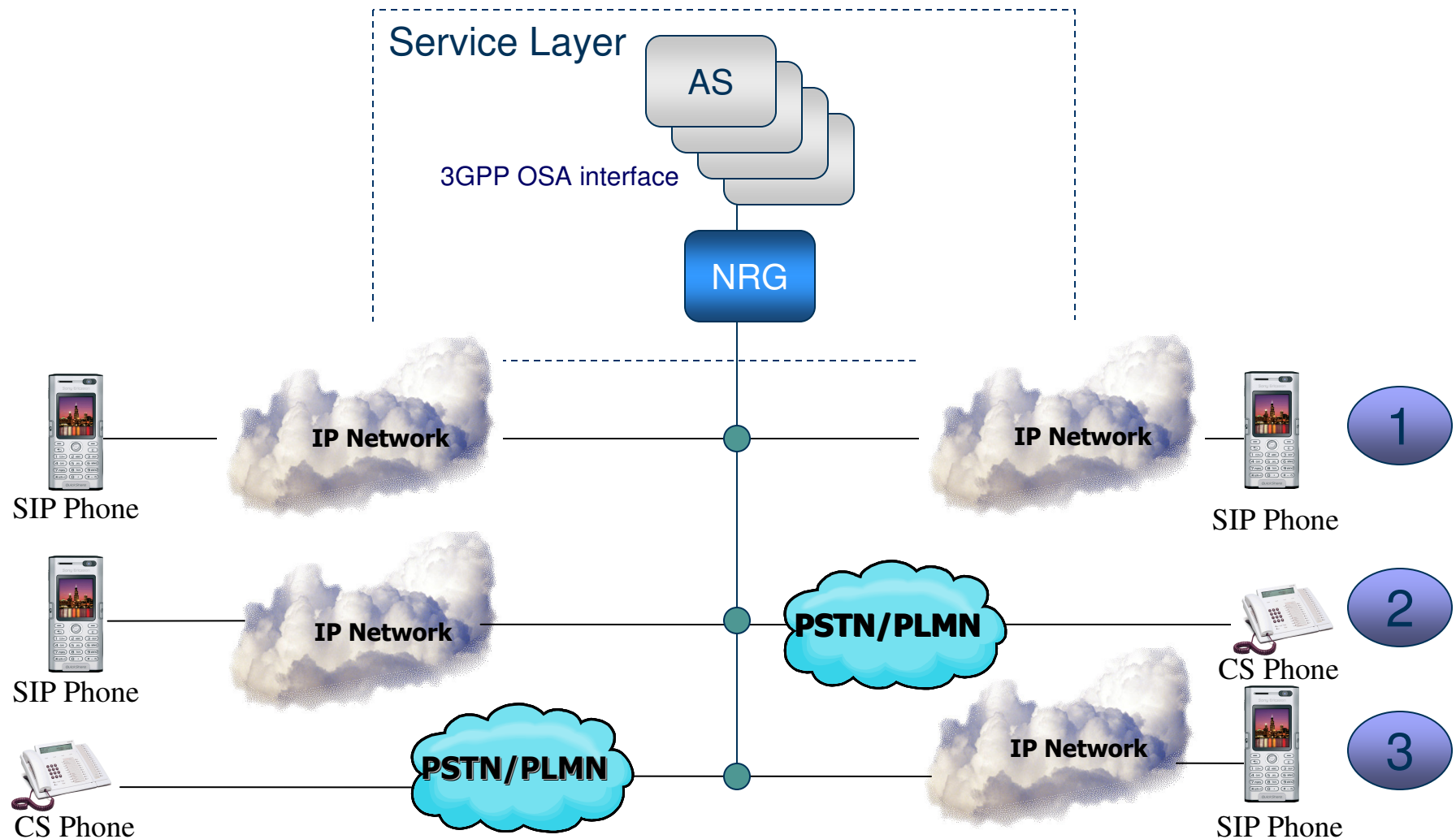
NRG role in IMS

- NRG brings service continuity into IMS
 - NRG secures the continuity of Number-based voice services when operators migrate from circuit switched to IMS
- NRG as a Presence Network Agent (PNA)
 - NRG act as a Presence Network Agent in IMS to access LBS, HLR etc. for further availability information like location from the CS Core network
- NRG acting as Presence Web Service Gateway

Service distribution between legacy and IMS



Service Continuity Case



NRG as part of the Ericsson IMS offering

NRG Software Development Kit



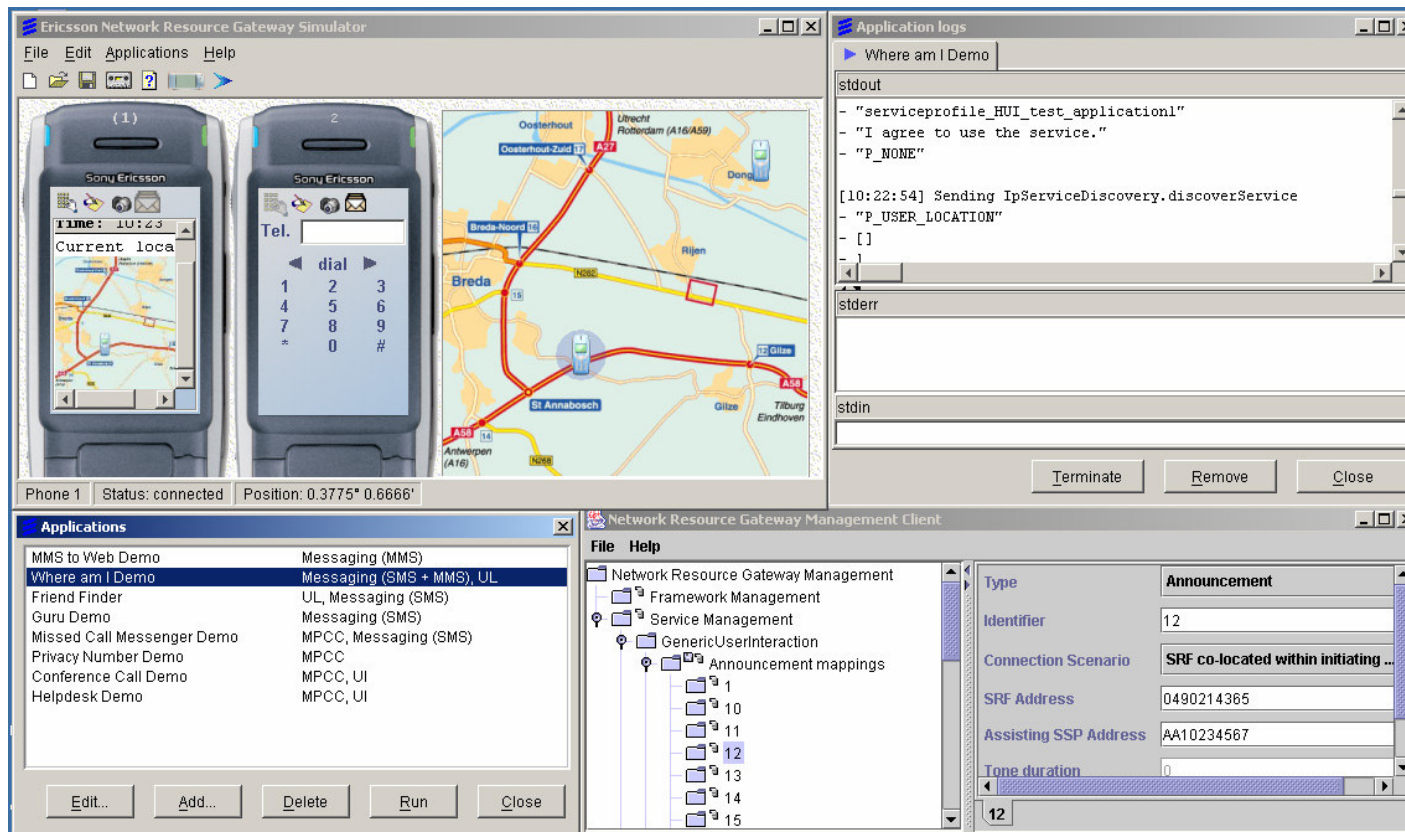
CD Available at Ericsson Mobility World for download:

- Documentation
- Programmers Guide
- JAVA software Libraries
- NRG Simulator
- Automated Test Tool
- Example applications
- Marketing material
- Educational videos

Available for download:

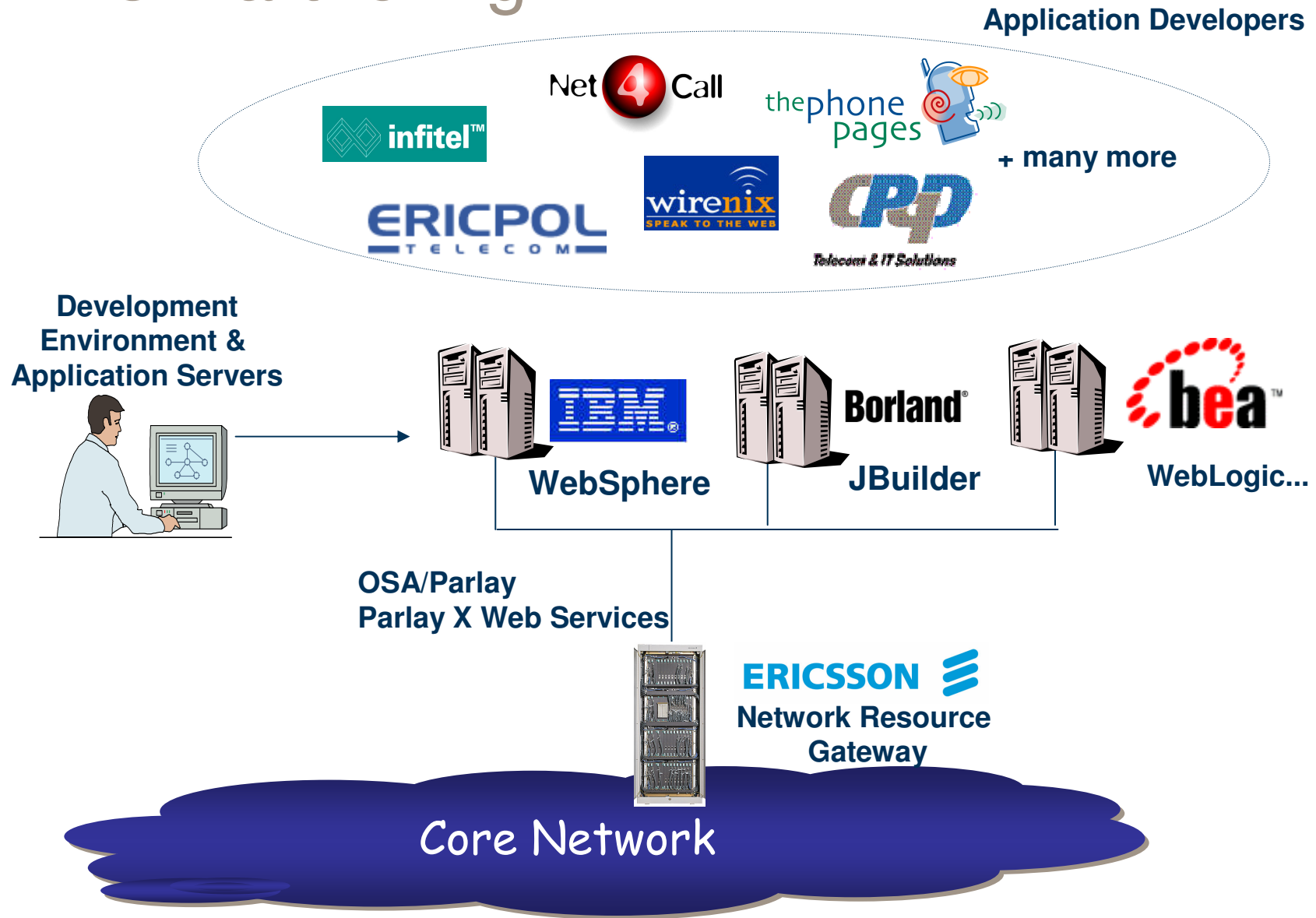
<http://www.ericsson.com/mobilityworld/sub/open/technologies/parlay/index.html>

NRG Simulator



- Simulates the telecom network, Parlay Gateway (NRG)
- Includes virtual phones.
- For debugging, testing and demonstrate OSA/Parlay applications.
- The NRG simulator runs on any PC or laptop.
- No need for access to telecom network for initial testing.

NRG Partnering



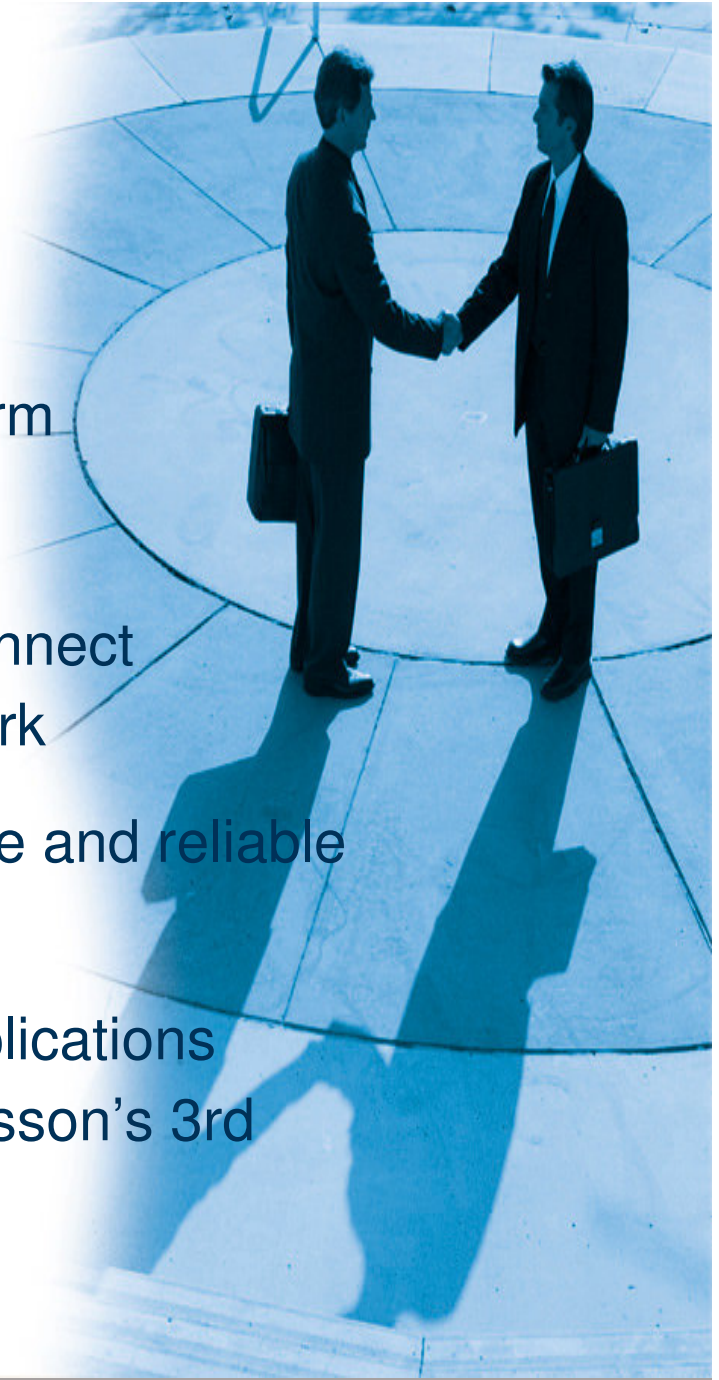
Ericsson is the market leading Parlay Gateway vendor!

34 NRG commercial deployments
plus additional trials



Benefits

1. Reduce OPEX in Service Delivery Platform
2. Fixed/Mobile/IP convergence
3. Wide support of business scenarios – connect enterprise, ASP, operators to your network
4. Utilize standardized technology for secure and reliable 3rd party access
5. Fast integration with large number of applications available of-the-shelf today, through Ericsson's 3rd party program



Thanks !



Reno Borges de Carvalho

Customer Solutions
Service Layer Applications

Ericsson Telecomunicações S.A.

R. Maria Prestes Maia, 300
São Paulo – SP – Brazil
02047-901

www.ericsson.com.br

Phone : +55 11 6224 8259
Fax: +55 11 6224 5233
Mobile: +55 11 8136 1890
reno.carvalho@ericsson.com

Questions ?



TAKING YOU FORWARD