

**SIEMENS VDO**  
A u t o m o t i v e

# Car in the Home ecosystem

*Supplying value.*

# Car as an Home extension



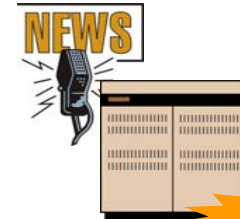
**GPS**



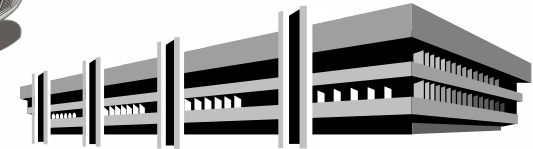
**Internet**



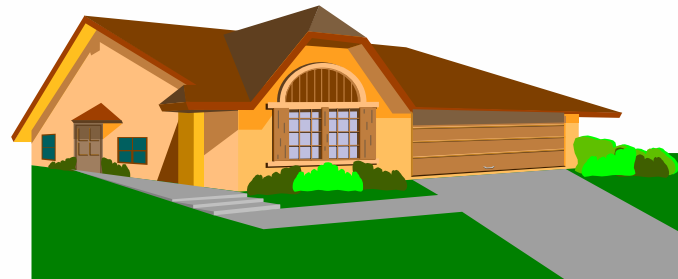
**E-mail**



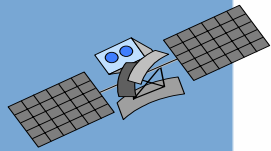
**Services**



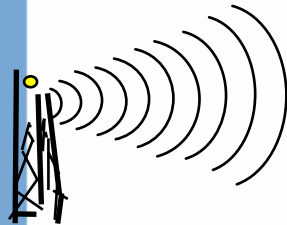
**Office**



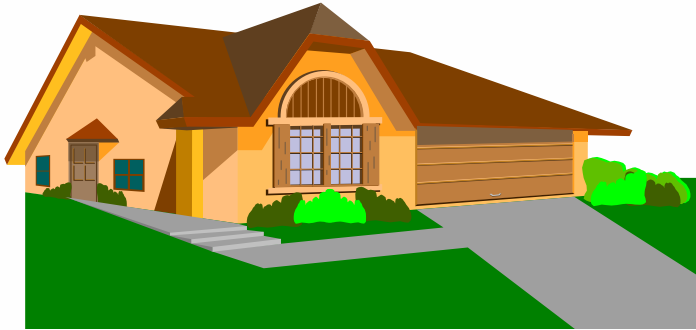
**Home**



**Satellite- Broadcast**



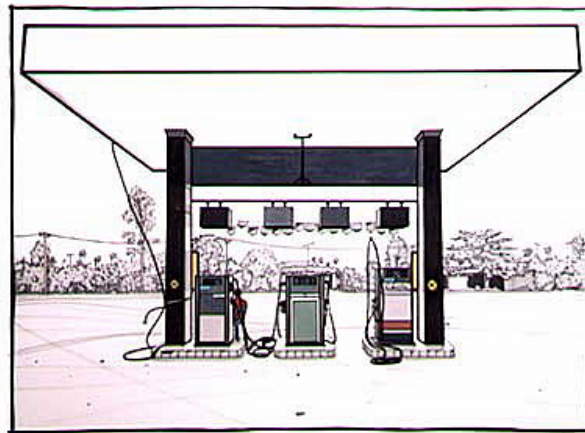
**Terrestrial Broadcast**

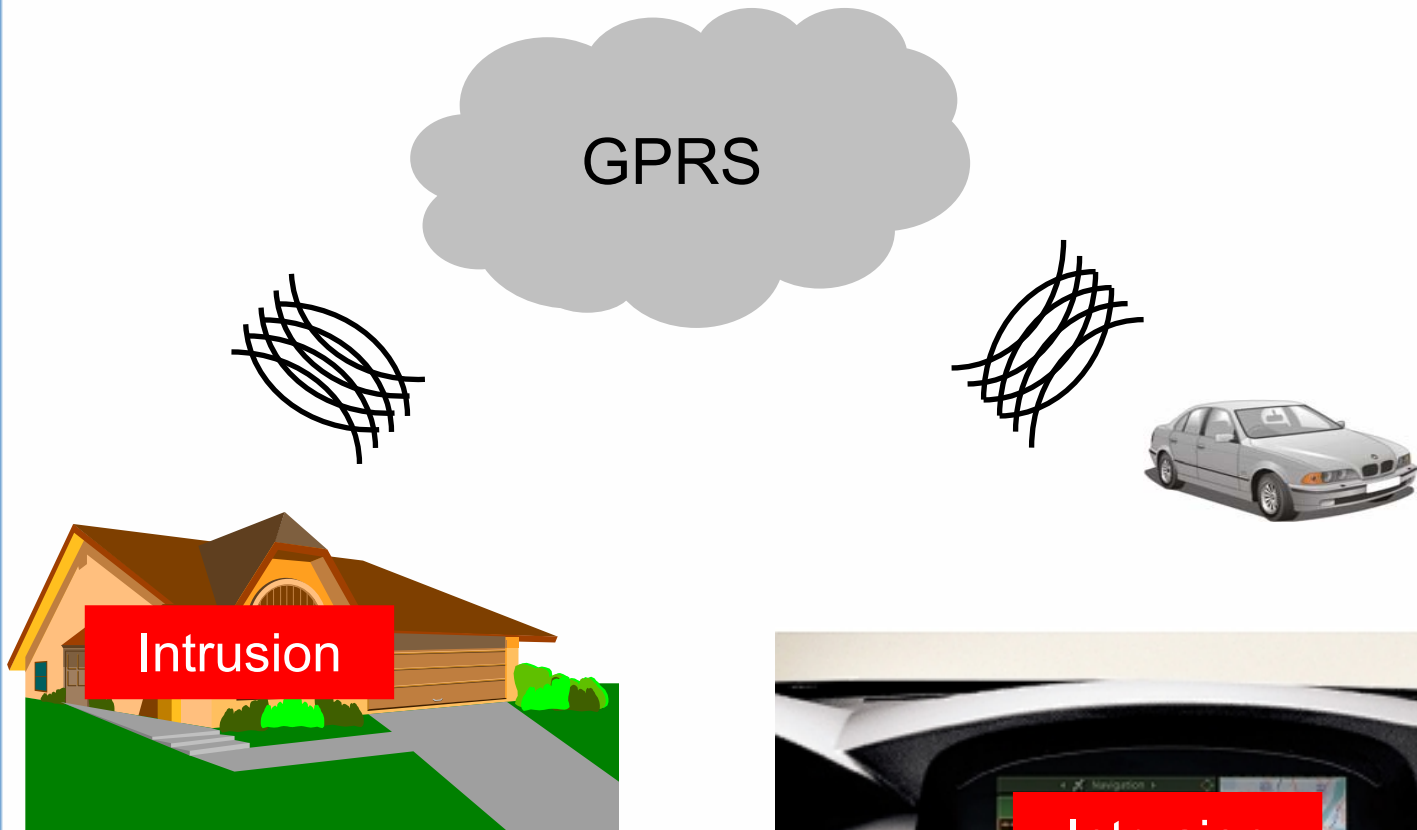


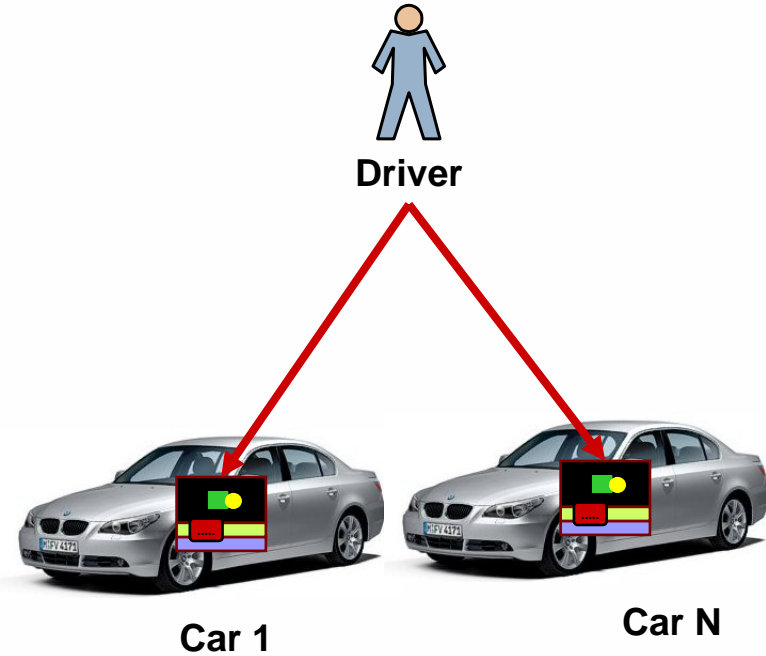
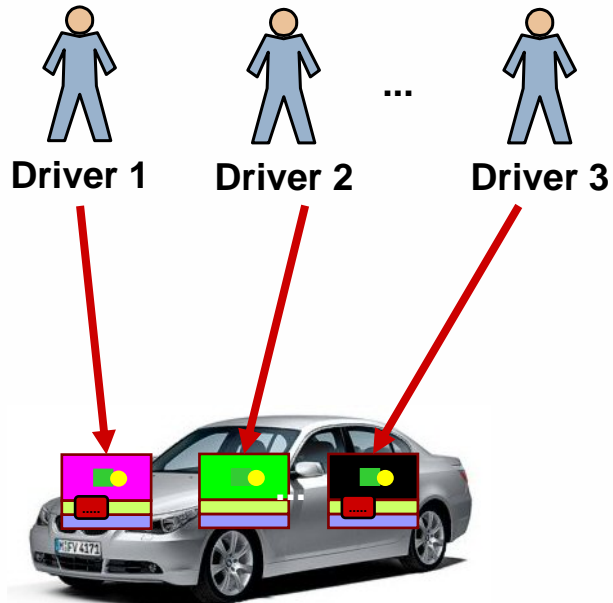
Personal  
content



Gift for  
purchase









- Long range wireless connectivity
- Short range wireless connectivity
- Content synchronization
- Application migration
- Interoperability
- Seamless integration of systems

- OSGi / Java
  - ◆ Scalable
  - ◆ Secure
  - ◆ Platform remotely controlled
  - ◆ Adopted by home gateways, vehicle systems and soon mobile phones
- RFID / NFC
- GPRS / UMTS
- Wifi
- Bluetooth
- Zigbee



- Standard Execution Environment
- HMI Integration
- Single authentication
- Security aspects
- Payment & Billing
- Integration of new standards
- Interoperability of heterogeneous systems
- Too many concurrent "standards"

- Standard Execution Environment
  - ◆ based on Java
  - ◆ based on OSGi Service Platform Specification
  
- HMI Integration
  - ◆ Description of HMI using meta-language
  
- Single Authentication
  - ◆ Mobile (SIM Card) can be used
  - ◆ coupled with RFID

- Security Aspects
  - ◆ Must adopt single authentication
  
- Payment & Billing
  - ◆ All services on the same bill
  
- Integration of new standards
  - ◆ Device must be remotely upgradeable

- Interoperability of heterogeneous systems
  - ◆ Certification process from autonomous organism like ETSI
  
- Too many concurrent "standards"
  - ◆ Promote a set of standards in a given context

## Olivier Pavé

Siemens VDO Automotive

Infotainment & Information Solutions

Sophia Antipolis, France

mailto: [olivier.pave@siemens.com](mailto:olivier.pave@siemens.com)

+33 (0) 492 381 129

**SIEMENS VDO**

A u t o m o t i v e